

ST Filter

The ST Filter is similar to the AVS line but is designed for topside bag replacement. It has square housings and clean air plenums with hinged top doors for easy access to the tube sheet and filters.

Style II filter includes the clean air plenum with hinged top doors, tubesheet, flanged air outlet, removable internal air piping, 4" compressed air header, 3/4" diaphragm air valves, and adjustable timer. Timer and solenoid valves are mounted and pre-wired in NEMA 12 enclosure mounted on compressed air header. 12 ga. bag housing flanged to plenum and mounting flange at base of housing.

Style III filter includes all above components plus 60° hopper flanged to housing, and stub air inlet.

Standard Specifications

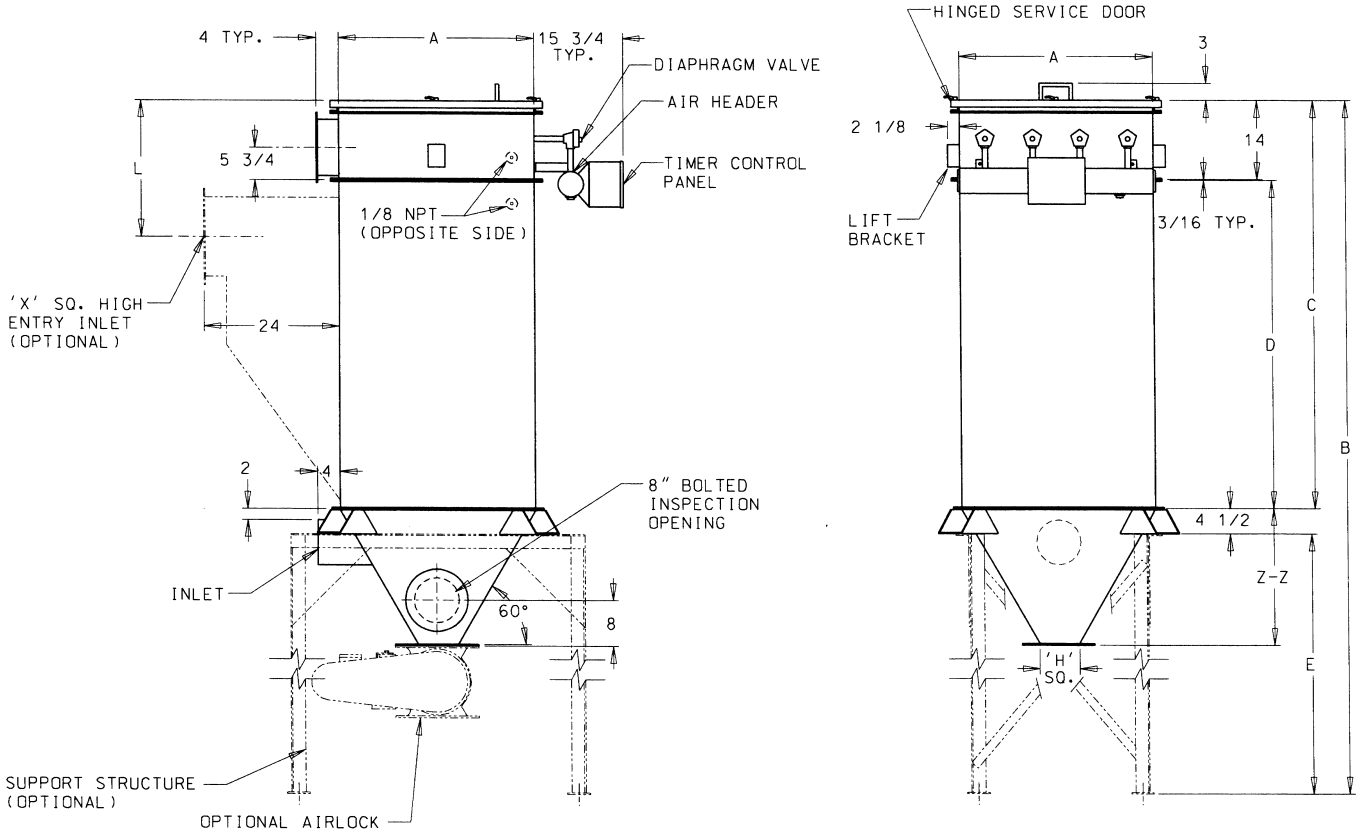
- 12 gauge carbon steel or 304 stainless steel construction*
- Rated to 17" w.c. static pressure
- Hinged top doors
- 4" compressed air header
- 3/4" diaphragm air valves
- Adjustable timer
- NEMA 12 enclosure with prewired timer and solenoid valves
- 60° hopper flanged to housing (Style III only)
- Stub air inlet

*stainless steel includes housing, hopper and tubesheet with all carbon steel flanges and reinforced ribs

Options

- 316 stainless steel
- 10 gauge carbon steel construction rated to 20" static pressure
- 304 stainless steel flanges for 304 stainless steel filters
- High entry inlet with bag protectors
- 70° hopper slope (style III only)
- Aluminum Venturi
- NEMA 4, 7 or 9 timer enclosure
- Exhaust weather hood with birdscreen 4 x 4 mesh (Style II only)
- Carbon steel service platform with ladder and safety cage
- T-handle food grade door
- Structural steel legs, 12" clearance
- Flanged air inlet
- Mount pads
- Side mounted or top mounted fans (restrictions exist - please contact your MAC Sales Representative)

HOPPER HEIGHT (Z-Z)							
Dimensions (IN.)							
MODEL	DISCHARGE 'H'						
	MD 20 8	9	MD40 10 STD.	MD75 12	14	15	MD139 16
ST9	15 ⁷ / ₈	15	14 ¹ / ₈	12 ³ / ₈			
ST16	23 ³ / ₁₆	22 ³ / ₈	21 ¹ / ₂	19 ³ / ₄	18	17 ¹³ / ₁₆	16 ³ / ₄
ST25	30 ⁹ / ₁₆	29 ³ / ₄	28 ⁷ / ₈	27 ¹ / ₈	25 ³ / ₈	24 ¹ / ₂	23 ³ / ₄
ST36	38	37 ¹ / ₈	36 ¹ / ₄	34 ¹ / ₂	32 ³ / ₄	31 ¹ / ₈	31
ST49	45 ¹ / ₄	44 ¹ / ₂	43 ¹ / ₂	41 ¹ / ₈	40	39 ¹ / ₄	38 ³ / ₈
ST64	52 ⁵ / ₈	51 ¹ / ₄	50 ⁷ / ₈	49 ³ / ₁₆	47 ⁷ / ₁₆	46 ⁹ / ₁₆	45 ³ / ₄



MODEL	CLOTH AREA	NO. OF BAGS	Dimensions (IN.)						MAX. A/L	SCFM	WEIGHT LBS.		
			A	B	C	D	E	F				L	X
18ST9	22	9	26	78 ¹¹ / ₁₆	36 ³ / ₁₆	22	38	10 DIA.	24 ³ / ₁₆	14	MD 40	3.6	460
36ST9	44	9	26	96 ¹¹ / ₁₆	54 ³ / ₁₆	40	38	10 DIA.	24 ³ / ₁₆	14	MD 40	3.6	550
54ST9	67	9	26	114 ¹¹ / ₁₆	72 ³ / ₁₆	58	38	10 DIA.	24 ³ / ₁₆	14	MD 40	3.6	630
72ST9	89	9	26	132 ¹¹ / ₁₆	90 ³ / ₁₆	76	38	10 DIA.	24 ³ / ₁₆	14	MD 40	3.6	710
18ST16	39	16	34 ¹ / ₂	86 ¹¹ / ₁₆	36 ³ / ₁₆	22	46	10 DIA.	24 ³ / ₁₆	14	MD 40	5.0	620
36ST16	78	16	34 ¹ / ₂	104 ¹¹ / ₁₆	54 ³ / ₁₆	40	46	10 DIA.	24 ³ / ₁₆	14	MD 40	5.0	750
54ST16	119	16	34 ¹ / ₂	122 ¹¹ / ₁₆	72 ³ / ₁₆	58	46	10 DIA.	24 ³ / ₁₆	14	MD 40	5.0	860
72ST16	159	16	34 ¹ / ₂	140 ¹¹ / ₁₆	90 ³ / ₁₆	76	46	10 DIA.	24 ³ / ₁₆	14	MD 40	5.0	9970
96ST16	209	16	34 ¹ / ₂	164 ¹¹ / ₁₆	114 ³ / ₁₆	100	46	10 DIA.	24 ³ / ₁₆	14	MD 40	5.0	1120
18ST25	62	25	43	94 ¹¹ / ₁₆	36 ³ / ₁₆	22	54	10 X 20	26 ³ / ₁₆	18	MD 40	5.8	840
36ST25	124	25	43	112 ¹¹ / ₁₆	54 ³ / ₁₆	40	54	10 X 20	26 ³ / ₁₆	18	MD 40	5.8	1010
54ST25	186	25	43	130 ¹¹ / ₁₆	72 ³ / ₁₆	58	54	10 X 20	26 ³ / ₁₆	18	MD 40	5.8	1160
72ST25	245	25	43	148 ¹¹ / ₁₆	90 ³ / ₁₆	76	54	10 X 20	26 ³ / ₁₆	18	MD 40	5.8	1250
96ST25	332	25	43	172 ¹¹ / ₁₆	114 ³ / ₁₆	100	54	10 X 20	26 ³ / ₁₆	18	MD 40	5.8	1440
36ST36	179	36	51 ¹ / ₂	120 ¹¹ / ₁₆	54 ³ / ₁₆	40	62	10 X 20	26 ³ / ₁₆	18	MD 40	7.3	1330
54ST36	269	36	51 ¹ / ₂	138 ¹¹ / ₁₆	72 ³ / ₁₆	58	62	10 X 20	26 ³ / ₁₆	18	MD 40	7.3	1540
72ST36	358	36	51 ¹ / ₂	156 ¹¹ / ₁₆	90 ³ / ₁₆	76	62	10 X 20	26 ³ / ₁₆	18	MD 40	7.3	1760
96ST36	478	36	51 ¹ / ₂	180 ¹¹ / ₁₆	114 ³ / ₁₆	100	62	10 X 20	26 ³ / ₁₆	18	MD 40	7.3	2040
36ST49	244	49	60	128 ¹¹ / ₁₆	54 ³ / ₁₆	40	70	10 X 36	29 ³ / ₁₆	24	MD 75	8.5	1580
54ST49	366	49	60	146 ¹¹ / ₁₆	72 ³ / ₁₆	58	70	10 X 36	29 ³ / ₁₆	24	MD 75	8.5	1980
72ST49	487	49	60	164 ¹¹ / ₁₆	90 ³ / ₁₆	76	70	10 X 36	29 ³ / ₁₆	24	MD 75	8.5	2170
96ST49	651	49	60	188 ¹¹ / ₁₆	114 ³ / ₁₆	100	70	10 X 36	29 ³ / ₁₆	24	MD 75	8.5	2490
36ST64	318	64	68 ¹ / ₂	136 ¹¹ / ₁₆	54 ³ / ₁₆	40	78	10 X 36	29 ³ / ₁₆	24	MD 139	10.9	1920
54ST64	478	64	68 ¹ / ₂	154 ¹¹ / ₁₆	72 ³ / ₁₆	58	78	10 X 36	29 ³ / ₁₆	24	MD 139	10.9	2280
72ST64	636	64	68 ¹ / ₂	172 ¹¹ / ₁₆	90 ³ / ₁₆	76	78	10 X 36	29 ³ / ₁₆	24	MD 139	10.9	2610
96ST64	850	64	68 ¹ / ₂	196 ¹¹ / ₁₆	114 ³ / ₁₆	100	78	10 X 36	29 ³ / ₁₆	24	MD 139	10.9	3050