

RTC Filter



Shown with optional butterfly valve

MAC's RTC filter offers all the advantages of the RT filter plus cartridge filtration media. Use of cartridges allows greater amounts of cloth per filter. For space or performance constraints, the RTC offers more square feet of cloth in a smaller package. With top hinged doors the cartridges can quickly and cleanly be removed without entering the filter.

MAC offers this filter in two styles: without the hopper (Style II) the filter is ideally suited as a bin vent filter for storage tanks, work bins and surge hoppers. With a 60° hopper (Style III) the filter receives dust through the hopper inlet and discharges the collected dust through an airlock for dust disposal or recycling.

Standard Specifications

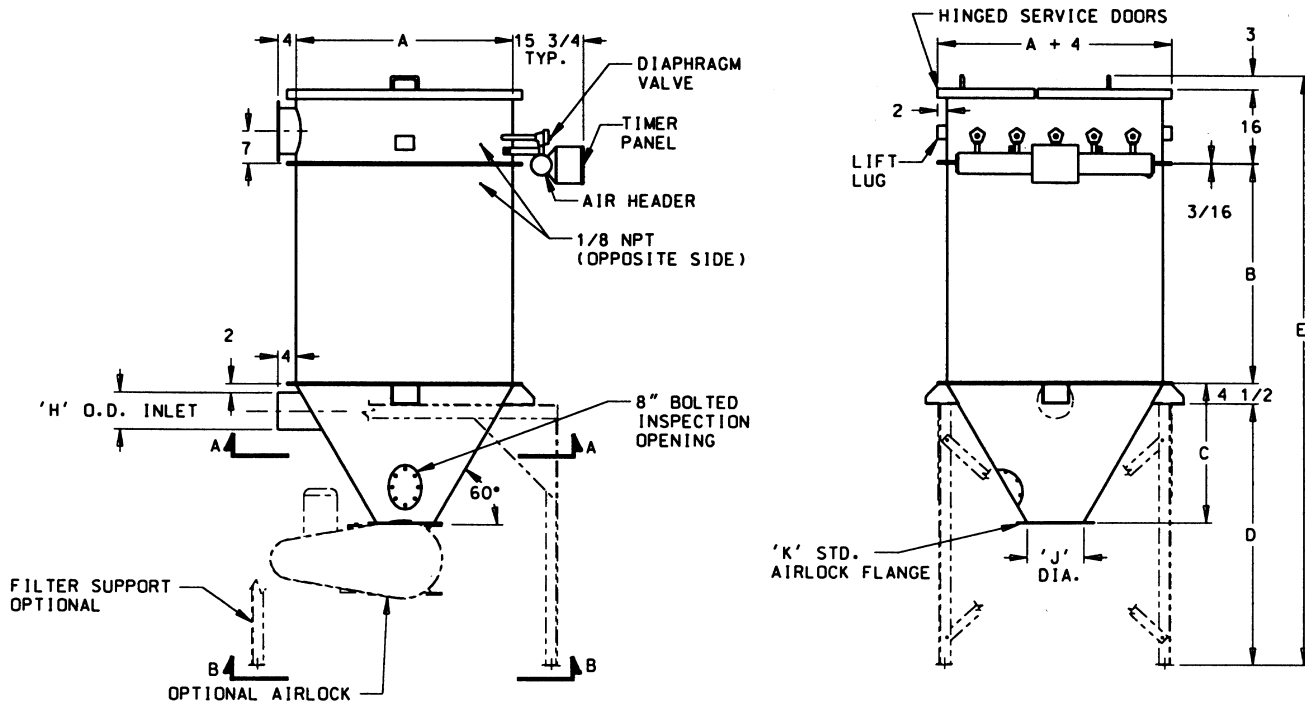
- Carbon steel or 304 stainless steel construction*
- Rated to 40" w.c. static pressure
- Full welded exterior and skip welded interior
- Timing board enclosures: NEMA 12
- Venturi nozzles and bag cups: mineral reinforced nylon
- Lifting lugs: Two on top plenum
- Inspection door:
 - Units with 18" long bags have an 18" x 17" tall bolted inspection panel
 - Units with bags longer than 18" have an 18" wide hinged inspection door
- Pressure differential gauge kit
- 60° hopper flanged to housing (Style III only)
- MAC white paint

*stainless steel includes housing, hopper and tubesheet with all carbon steel flanges and reinforced ribs

Options

- 316 stainless steel
- 10 gauge carbon steel construction rated to 20" static pressure
- 304 stainless steel flanges for 304 stainless steel filters
- High entry inlet with bag protectors
- 70° hopper slope (style III only)
- Aluminum Venturi
- NEMA 4, 7 or 9 timer enclosure
- Exhaust weather hood with birdscreen 4 x 4 mesh (Style II only)
- Carbon steel service platform with ladder and safety cage
- T-handle food grade door
- Structural steel legs, 12" clearance
- Flanged air inlet
- Mount pads
- Side mounted or top mounted fans (restrictions exist - please contact your MAC Sales Representative)

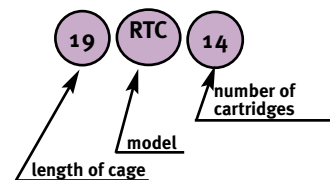




MODEL	FILTER AREA	NO. OF CARTRIDGES	Dimensions (IN.)								MAXIMUM AIRLOCK	SCFM	WEIGHT LBS.
			A	B	C	D	E	G	J	K			
19RTC7	138	7	28	28	17 ⁹ / ₁₆	40 ³ / ₄	92 ⁷ / ₁₆	10 DIA.	8	MD 20	MD 40	3.3	565
39RTC7	276	7	28	48	17 ⁹ / ₁₆	40 ³ / ₄	112 ⁷ / ₁₆	10 DIA.	8	MD 20	MD 40	3.3	710
19RTC14	276	14	40	28	26 ¹ / ₂	51	102 ¹¹ / ₁₆	10 DIA.	10	MD 40	MD 40	4.7	770
39RTC14	552	14	40	48	26 ¹ / ₂	51	122 ¹¹ / ₁₆	10 DIA.	10	MD 40	MD 40	4.7	990
19RTC21	414	21	47	28	32 ³ / ₁₆	57	108 ¹¹ / ₁₆	10 X 20	10	MD 40	MD 40	5.4	1280
39RTC21	827	21	47	48	32 ³ / ₁₆	57	128 ¹¹ / ₁₆	10 X 20	10	MD 40	MD 40	5.4	1470
19RTC32	630	32	60	28	43 ⁹ / ₁₆	68 ³ / ₄	119 ¹⁵ / ₁₆	10 X 20	10	MD 40	MD 40	6.5	1885
39RTC32	1261	32	60	48	43 ⁹ / ₁₆	68 ³ / ₄	139 ¹⁵ / ₁₆	10 X 20	10	MD 40	MD 40	6.5	2035
39RTC39	1537	39	66	48	48 ³ / ₄	73 ¹ / ₂	145 ¹³ / ₁₆	10 X 30	10	MD 40	MD 40	7.5	2570
39RTC52	2049	52	72	48	54	78 ⁵ / ₈	150 ⁵ / ₁₆	10 X 30	10	MD 40	MD 40	9.1	3080
39RTC62	2443	62	84	48	62 ³ / ₈	89 ¹ / ₄	160 ¹⁵ / ₁₆	10 X 45	12	MD 75	MD 139	10.6	3675
39RTC80	3152	80	93	48	67	97	168 ¹¹ / ₁₆	10 X 45	16	MD 139	MD 139	13.2	4575

HOPPER SCHEDULE

AIRLOCK FLANGE	'J' DIA. DISCHARGE	Dimensions (IN.)							
		7	14	21	32	39	52	62	80
FTA/TRA-30, 9X9, MD20	8	17 ⁹ / ₁₆	28	34	45 ⁵ / ₁₆	54	64 ³ / ₈	72 ¹ / ₈	80
FTA/TRA-60, MD40	10	15 ⁷ / ₈	26 ³ / ₄	32 ³ / ₁₆	43 ⁹ / ₁₆	48 ³ / ₄	54	64 ³ / ₈	72 ¹ / ₈
12X12, MD75	12	14 ¹ / ₈	24 ¹ / ₂	30 ⁹ / ₁₆	41 ¹³ / ₁₆	47	52 ¹ / ₄	62 ³ / ₈	70 ³ / ₈
15X15	14	-----	-----	28 ⁷ / ₈	40 ³ / ₈	45 ¹ / ₄	50 ¹ / ₂	60 ⁷ / ₈	68 ¹¹ / ₁₆
15X15	15	-----	-----	28	39 ¹ / ₄	44 ⁷ / ₁₆	49 ⁵ / ₈	60	67 ⁷ / ₈
MD139	16	-----	-----	27 ¹ / ₈	38 ³ / ₈	43 ³ / ₁₆	48 ³ / ₄	59 ⁵ / ₈	67
18X18	18	-----	-----	25 ³ / ₈	36 ³ / ₈	41 ¹³ / ₁₆	47	57 ¹ / ₁₆	65 ¹ / ₄
MD260	19	-----	-----	24 ¹ / ₂	35 ³ / ₄	40 ³ / ₈	46 ¹ / ₈	56 ⁹ / ₁₆	64 ³ / ₈
MD400	20	-----	-----	23 ³ / ₈	34 ⁷ / ₈	40 ¹ / ₈	45 ¹ / ₄	55 ¹¹ / ₁₆	63 ¹ / ₂



Each RTC filter comes with an informational model number to better identify it.