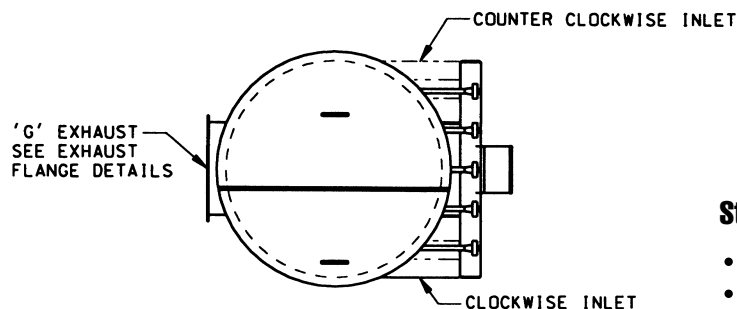


RTC Filter with Pneumatic Receiver



Utilizing filter cartridges instead of bags, this filter is an excellent product receiver. Product enters the filter and is separated from the air-flow via centrifugal force. The product is discharged from the bottom of the filter, while the cleaned conveying air is exhausted at the top. Use of fabric cartridges increases the amount of cloth area each filter can provide.



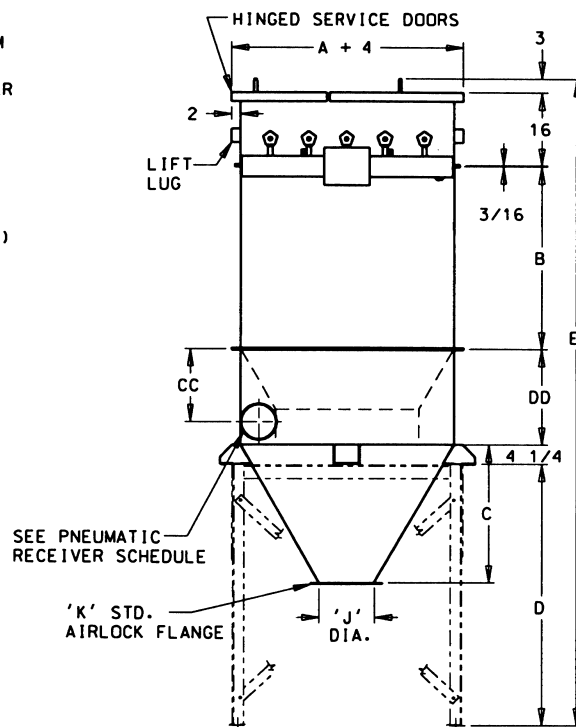
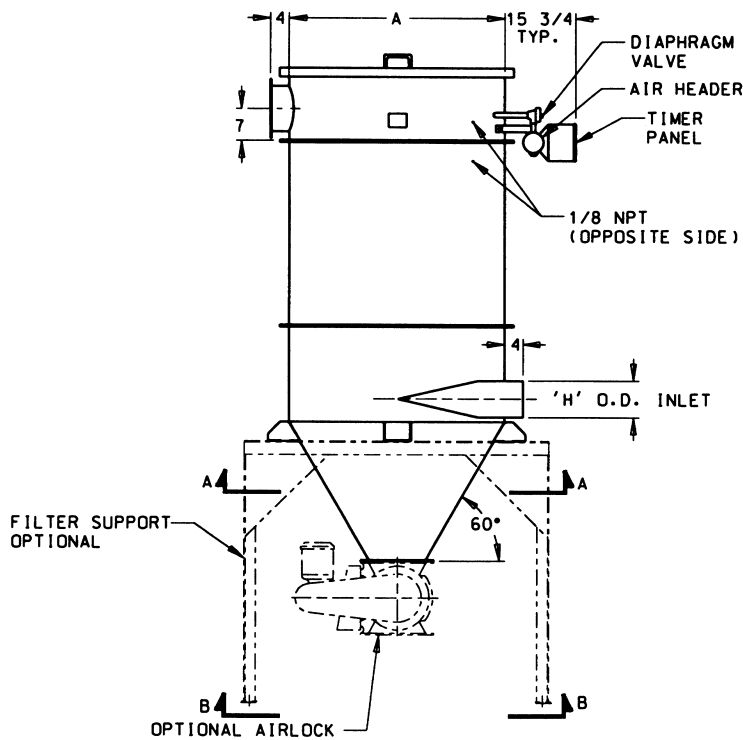
Standard Specifications

- Carbon steel or 304 stainless steel construction*
- Pneumatic receiver
- Rated to 40" w.c. static pressure
- Full welded exterior and skip welded interior
- Timing board enclosures: NEMA 12
- Venturi nozzles and bag cups: mineral reinforced nylon
- Lifting lugs: Two on top plenum
- Inspection door:
 - Units with 18" long bags have an 18" x 17" tall bolted inspection panel
 - Units with bags longer than 18" have an 18" wide hinged inspection door
- Pressure differential gauge kit
- 60° hopper flanged to housing (Style III only)
- MAC white paint

*stainless steel includes housing, hopper and tubesheet with all carbon steel flanges and reinforced ribs

Options

- 316 stainless steel
- 10 gauge carbon steel construction rated to 20" static pressure
- 304 stainless steel flanges for 304 stainless steel filters
- High entry inlet with bag protectors
- 70° hopper slope (style III only)
- Aluminum Venturi
- NEMA 4, 7 or 9 timer enclosure
- Exhaust weather hood with birdscreen 4 x 4 mesh (Style II only)
- Carbon steel service platform with ladder and safety cage
- T-handle food grade door
- Structural steel legs, 12" clearance
- Flanged air inlet
- Mount pads
- Side mounted or top mounted fans (restrictions exist - please contact your MAC Sales Representative)



MODEL	FILTER AREA	NO. OF CARTRIDGES	Dimensions (IN.)								MAXIMUM		WEIGHT LBS.	
			A	B	C	D	E	G	H	J	K	AIRLOCK		SCFM
19RTC7	138	7	28	28	17 ⁷ / ₁₆	40 ³ / ₄	92 ¹ / ₁₆	10 DIA.	3	8	MD 20	MD 40	3.3	570
39RTC7	276	7	28	48	17 ⁷ / ₁₆	40 ³ / ₄	112 ¹ / ₁₆	10 DIA.	4	8	MD 20	MD 40	3.3	770
19RTC14	276	14	40	28	26 ¹ / ₈	51	102 ¹ / ₁₆	10 DIA.	5	10	MD 40	MD 40	4.2	1010
39RTC14	552	14	40	48	26 ¹ / ₈	51	122 ¹ / ₁₆	10 DIA.	6	10	MD 40	MD 40	4.2	1190
19RTC21	414	21	47	28	32 ³ / ₁₆	57	108 ¹ / ₁₆	10 X 20	6	10	MD 40	MD 40	5.4	1625
39RTC21	827	21	47	48	32 ³ / ₁₆	57	128 ¹ / ₁₆	10 X 20	8	10	MD 40	MD 40	5.4	1790
19RTC32	630	32	60	28	43 ⁷ / ₁₆	68 ³ / ₄	119 ¹ / ₁₆	10 X 20	6	10	MD 40	MD 40	6.5	2340
39RTC32	1261	32	60	48	43 ⁷ / ₁₆	68 ³ / ₄	139 ¹ / ₁₆	10 X 20	8	10	MD 40	MD 40	6.5	2650
39RTC39	1537	39	66	48	48 ⁵ / ₈	73 ¹ / ₂	145 ¹ / ₁₆	10 X 30	10	10	MD 40	MD 40	7.5	3150
39RTC52	2049	52	72	48	53 ⁷ / ₈	78 ⁵ / ₈	150 ⁵ / ₁₆	10 X 30	12	10	MD 40	MD 40	9.1	3830
39RTC62	2443	62	84	48	62 ¹ / ₂	89 ¹ / ₄	160 ¹ / ₁₆	10 X 45	12	12	MD 75	MD 139	10.6	4505
39RTC80	3152	80	93	48	66 ⁷ / ₈	97	168 ¹ / ₁₆	10 X 45	12	16	MD 139	MD 139	13.2	5282

HOPPER SCHEDULE

AIRLOCK FLANGE	'J' DIA. DISCHARGE	Dimensions (IN.)							
		7	14	21	32	39	52	62	80
FTA/TRA-30, 9X9, MD20	8	17 ⁷ / ₁₆	27 ⁷ / ₈	33 ⁷ / ₈	45 ³ / ₁₆	~~~~~	~~~~~	~~~~~	~~~~~
FTA/TRA-60, MD40	10	15 ³ / ₄	26 ¹ / ₈	32 ³ / ₁₆	43 ⁷ / ₁₆	48 ⁵ / ₈	53 ⁷ / ₈	64 ³ / ₄	72
12X12, MD75	12	14	24 ³ / ₈	30 ⁷ / ₁₆	41 ¹ / ₁₆	46 ⁷ / ₈	52 ⁷ / ₈	62 ¹ / ₂	70 ¹ / ₄
15X15	14	~~~~~	~~~~~	28 ³ / ₄	40	45 ¹ / ₈	50 ³ / ₈	60 ³ / ₄	68 ⁹ / ₁₆
~~~~~	15	~~~~~	~~~~~	27 ⁷ / ₈	39 ¹ / ₈	45 ⁵ / ₁₆	49 ¹ / ₂	59 ⁷ / ₈	67 ³ / ₄
MD139	16	~~~~~	~~~~~	27	38 ¹ / ₄	43 ⁷ / ₁₆	48 ⁵ / ₈	59	66 ⁷ / ₈
18X18	18	~~~~~	~~~~~	25 ¹ / ₄	36 ¹ / ₂	41 ¹ / ₁₆	46 ⁷ / ₈	57 ⁵ / ₁₆	65 ⁵ / ₈
MD260	19	~~~~~	~~~~~	24 ³ / ₈	35 ⁵ / ₈	40 ⁷ / ₈	46	56 ⁷ / ₁₆	64 ³ / ₄
MD400	20	~~~~~	~~~~~	23 ¹ / ₂	34 ³ / ₄	40	45 ⁵ / ₈	55 ⁵ / ₁₆	63 ³ / ₈