

LST Filter

Designed for large air capacities, the MAC LST has top side bag replacement and an optional walk-in clean air plenum. Hinged top doors open to the clean-air plenum and allow easy access to the tube sheet and filters.

MAC offers this filter in two styles: without the hopper (Style II) the filter is ideally suited as a bin vent filter for storage tanks, work bins and surge hoppers. With a 60° hopper (Style III) the filter receives dust through the hopper inlet and discharges the collected dust through an airlock for dust disposal or recycling.

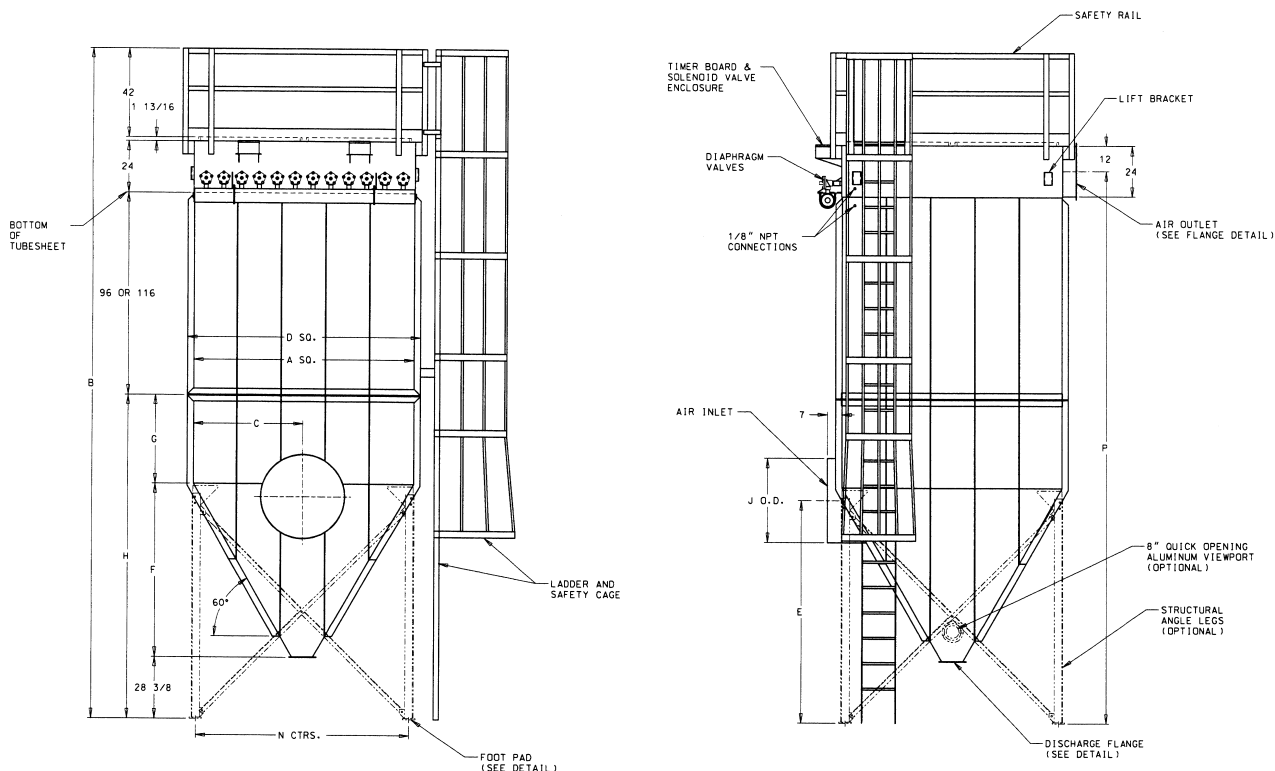
Standard Specifications

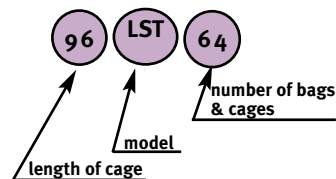
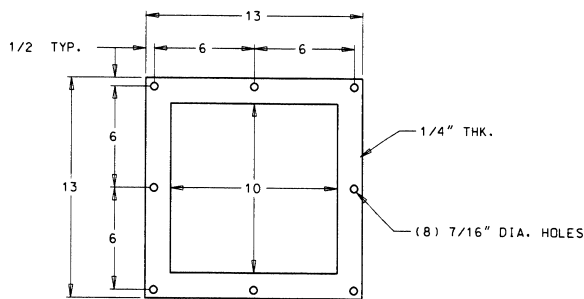
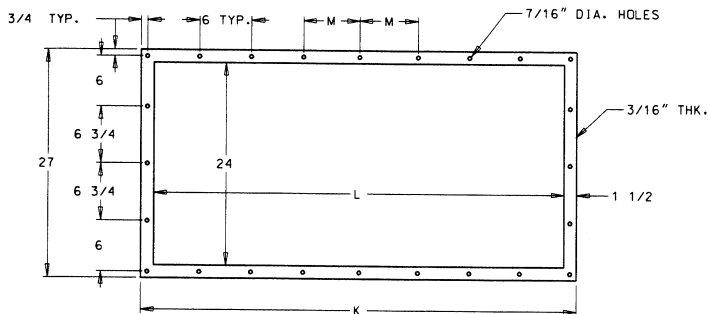
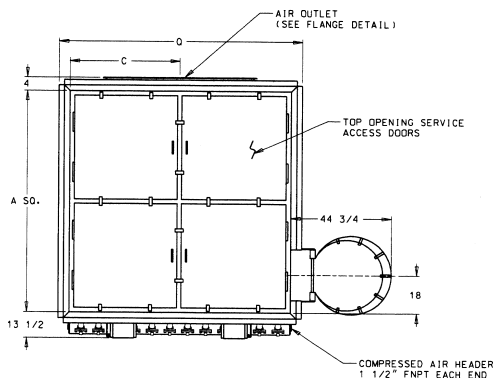
- 12 gauge carbon steel or 304 stainless steel construction*
- Designed for 17" w.c. static pressure maximum
- Winged top door entry to clean air plenum
- 6" compressed air header
- Diaphragm air valves
- Adjustable timer
- Top guard rail assembly
- Ladder and safety cage
- Time and solenoid valves mounted and prewired in NEMA 12 enclosure
- Removable internal air piping
- 60° hopper flanged to housing (Style III only)
- Round stub air inlet with inlet deflector (Style III only)

*stainless steel includes housing, hopper and tubesheet with all carbon steel flanges and reinforced ribs

Options

- 10 gauge carbon steel or 304 stainless steel construction for 20" w.c. static pressure
- 304 stainless steel flanges for 304 stainless steel filters
- 316 stainless steel construction





Each LST filter comes with an informational model number to better identify it.

MODEL	FILTER AREA	NO. OF CARTRIDGES	Dimensions (IN.)																	SCFM	WEIGHT LBS.
			A	B	C	D	E	F	G	H	J	K	L	M	N	P	Q				
96LST64	845	64	70 1/2	262 11/16	35 3/4	76 1/2	81 7/8	52 1/2	18	98 7/8	35	26	32	4 3/4	68	206 7/8	81 7/8	10	4180		
120LST64	1062	64	70 1/2	286 11/16	35 3/4	76 1/2	81 7/8	52 1/2	42	122 7/8	35	26	32	4 3/4	68	230 7/8	81 7/8	10	4460		
144LST64	1280	64	70 1/2	310 11/16	35 3/4	76 1/2	81 7/8	52 1/2	66	146 7/8	35	26	32	4 3/4	68	254 7/8	81 7/8	10	4950		
96LST81	1069	81	79	270 1/16	39 1/2	85	87 3/4	59 7/8	18	106 3/4	43	30	40	2 3/4	76 1/2	214 3/4	90 3/8	10	5030		
120LST81	1345	81	79	294 1/16	39 1/2	85	87 3/4	59 7/8	42	130 3/4	43	30	40	2 3/4	76 1/2	238 3/4	90 3/8	10	5370		
144LST81	1620	81	79	318 1/16	39 1/2	85	87 3/4	59 7/8	66	154 3/4	43	30	40	2 3/4	76 1/2	262 3/4	90 3/8	10	5980		
96LST100	1320	100	87 1/2	277 7/16	43 3/4	93 1/2	92 5/8	67 1/4	18	113 5/8	51	34	48	6 3/4	84	221 5/8	98 7/8	21	5980		
120LST100	1660	100	87 1/2	301 7/16	43 3/4	93 1/2	92 5/8	67 1/4	42	137 5/8	51	34	48	6 3/4	84	245 5/8	98 7/8	21	6370		
144LST100	2000	100	87 1/2	325 7/16	43 3/4	93 1/2	92 5/8	67 1/4	66	161 5/8	51	34	48	6 3/4	84	269 5/8	98 7/8	21	7100		
96LST144	1901	144	104 1/2	292 5/8	52 1/4	110 1/2	104 5/16	81 15/16	18	128 5/16	73	40	70	5 3/4	101	236 5/8	115 7/8	42	7450		
120LST144	2390	144	104 1/2	316 5/8	52 1/4	110 1/2	104 5/16	81 15/16	42	152 5/16	73	40	70	5 3/4	101	260 5/8	115 7/8	42	7850		
144LST144	2880	144	104 1/2	340 5/8	52 1/4	110 1/2	104 5/16	81 15/16	66	156 5/16	73	40	70	5 3/4	101	284 5/8	115 7/8	42	8750		
96LST196	2587	196	121 1/2	306 7/8	60 3/4	127 1/2	116 1/16	96 11/16	18	143 3/16	73	46	70	5 3/4	116 3/4	251 1/16	132 7/8	42	10000		
120LST196	3254	196	121 1/2	330 7/8	60 3/4	127 1/2	116 1/16	96 11/16	42	167 1/16	73	46	70	5 3/4	116 3/4	275 1/16	132 7/8	42	11000		
144LST196	3920	196	121 1/2	354 7/8	60 3/4	127 1/2	116 1/16	96 11/16	66	171 1/16	73	46	70	5 3/4	116 3/4	299 1/16	132 7/8	42	12000		