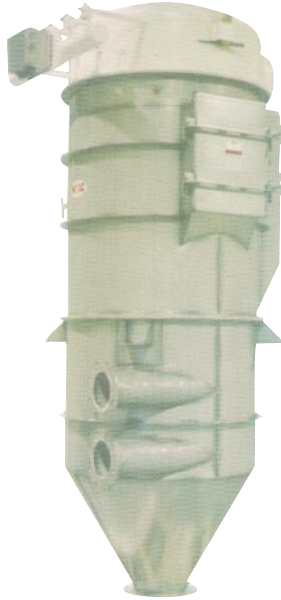


# Air Vent Round (AVR) Filters

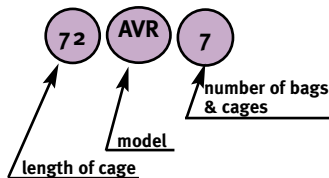


The MAC Air-Vent Round (AVR) filter receiver is designed to receive product from a vacuum or pressure system and is a bottom bag removal filter. The AVR is ideally suited as a bin vent filter for a storage tank or work bin.

MAC offers this filter in two styles: without the hopper (Style II) the filter is ideally suited as a bin vent filter for storage tanks, work bins and surge hoppers. With a 60° hopper (Style III) the filter receives dust through the hopper inlet and discharges the collected dust through an airlock for dust disposal or recycling.

## Arrangement

Inspection door and header at 3:00, exhaust at 9:00, radial inlet at 9:00  
 AVR21 and smaller: mount pads at 12:00, 3:00 and 6:00  
 AVR32 and larger: mount pads at 1:30, 4:30, 7:30 and 10:30  
 Hopper can be rotated



Each AVR filter comes with an informational model number to better identify it.

## Standard Specifications

- Carbon steel or 304 stainless steel construction\*
- Rated to 40" w.c. static pressure
- Full welded exterior and skip welded interior
- Timing board enclosures: NEMA 12
- Venturi nozzles and bag cups: mineral reinforced nylon
- Bag cages: galvanized carbon steel
- Bags: 16oz. singed dacron polyester
- Lifting lugs: Two on top plenum
- Inspection door:
  - Units with 18" long bags have an 18" x 17" tall bolted inspection panel
  - Units with bags longer than 18" have an 18" wide hinged inspection door
- Pressure differential gauge kit
- 60° hopper flanged to housing (Style III only)
- MAC white paint

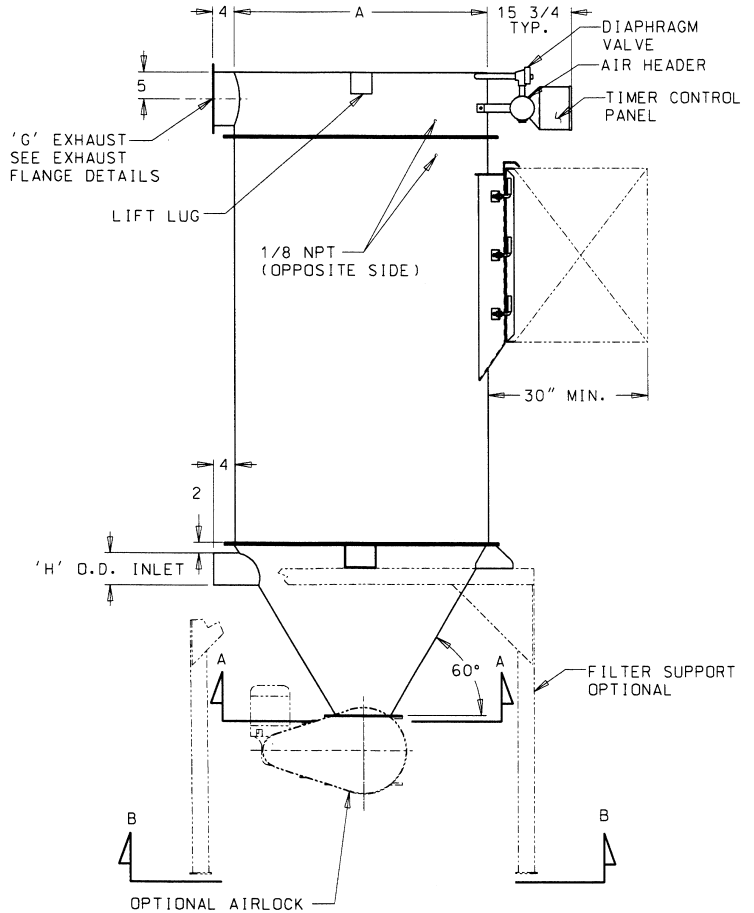
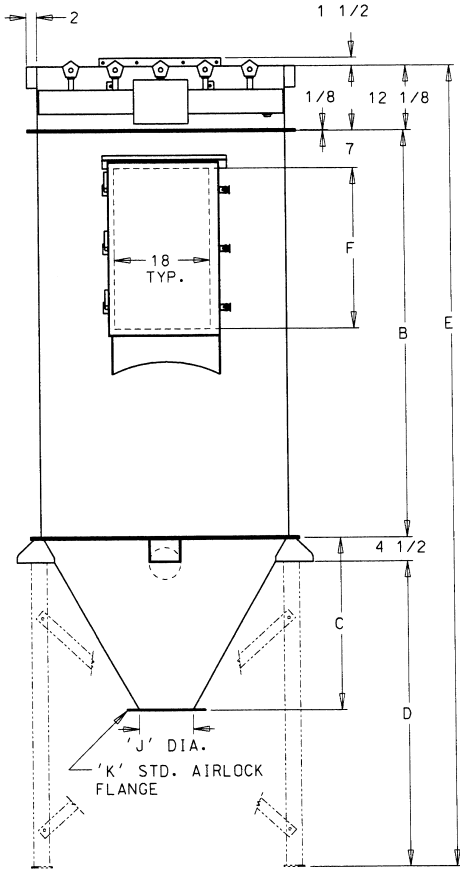
\*stainless steel includes housing, hopper and tubesheet with all carbon steel flanges and reinforced ribs

## Options

- 316 stainless steel
- 10 gauge carbon steel construction rated to 20" static pressure
- 304 stainless steel flanges for 304 stainless steel filters
- High entry inlet with bag protectors
- 70° hopper slope (style III only)
- Aluminum Venturi
- NEMA 4, 7 or 9 timer enclosure
- Exhaust weather hood with birdscreen 4 x 4 mesh (Style II only)
- Carbon steel service platform with ladder and safety cage
- T-handle food grade door
- Structural steel legs, 12" clearance
- Flanged air inlet
- Mount pads
- Side mounted or top mounted fans (restrictions exist - please contact your MAC Sales Representative)

## HOPPER SCHEDULE

AIRLOCK FLANGE	'J' DIA. DISCHARGE	Dimensions (IN.)							
		AVR FILTER / 'C' DIMENSION							
		7	14	21	32	39	52	62	80
MD 20	8	17 <sup>1</sup> / <sub>16</sub>	28	34	45 <sup>1</sup> / <sub>4</sub>	-----	-----	-----	-----
MD 40	10	15 <sup>7</sup> / <sub>16</sub>	26 <sup>1</sup> / <sub>4</sub>	32 <sup>5</sup> / <sub>16</sub>	43 <sup>9</sup> / <sub>16</sub>	48 <sup>3</sup> / <sub>4</sub>	54	64 <sup>3</sup> / <sub>8</sub>	72 <sup>1</sup> / <sub>8</sub>
MD 75	12	14 <sup>1</sup> / <sub>8</sub>	24 <sup>1</sup> / <sub>2</sub>	30 <sup>9</sup> / <sub>16</sub>	41 <sup>13</sup> / <sub>16</sub>	47	52 <sup>1</sup> / <sub>4</sub>	62 <sup>5</sup> / <sub>8</sub>	70 <sup>3</sup> / <sub>8</sub>
MD 75	14	-----	-----	28 <sup>7</sup> / <sub>8</sub>	40 <sup>3</sup> / <sub>8</sub>	45 <sup>1</sup> / <sub>4</sub>	50 <sup>1</sup> / <sub>2</sub>	60 <sup>7</sup> / <sub>8</sub>	68 <sup>11</sup> / <sub>16</sub>
MD 75	15	-----	-----	28	39 <sup>1</sup> / <sub>4</sub>	44 <sup>7</sup> / <sub>16</sub>	49 <sup>5</sup> / <sub>8</sub>	60	67 <sup>7</sup> / <sub>8</sub>
MD 139	16	-----	-----	27 <sup>1</sup> / <sub>8</sub>	38 <sup>3</sup> / <sub>8</sub>	43 <sup>9</sup> / <sub>16</sub>	48 <sup>3</sup> / <sub>4</sub>	59 <sup>1</sup> / <sub>8</sub>	67
MD 139	18	-----	-----	25 <sup>3</sup> / <sub>8</sub>	36 <sup>5</sup> / <sub>8</sub>	41 <sup>13</sup> / <sub>16</sub>	47	57 <sup>1</sup> / <sub>16</sub>	65 <sup>1</sup> / <sub>4</sub>
MD 260	19	-----	-----	24 <sup>1</sup> / <sub>2</sub>	35 <sup>3</sup> / <sub>4</sub>	41	46 <sup>1</sup> / <sub>8</sub>	56 <sup>9</sup> / <sub>16</sub>	64 <sup>3</sup> / <sub>8</sub>
MD 260	20	-----	-----	23 <sup>5</sup> / <sub>8</sub>	34 <sup>7</sup> / <sub>8</sub>	40 <sup>1</sup> / <sub>8</sub>	45 <sup>1</sup> / <sub>4</sub>	55 <sup>1</sup> / <sub>16</sub>	63 <sup>1</sup> / <sub>2</sub>



Dimensions (IN.)

MODEL	FILTER AREA	NO. OF CARTRIDGES	Dimensions (IN.)								MAXIMUM AIRLOCK		WEIGHT LBS.	
			A	B	C	D	E	F	G	J	K	SCFM		
18AVR7	17	7	28	28	17 <sup>9</sup> / <sub>16</sub>	40 <sup>3</sup> / <sub>4</sub>	85 <sup>3</sup> / <sub>8</sub>	20	10 DIA.	8	MD 20	MD 40	3.3	480
36AVR7	34	7	28	40	17 <sup>9</sup> / <sub>16</sub>	40 <sup>3</sup> / <sub>4</sub>	97 <sup>3</sup> / <sub>8</sub>	22	10 DIA.	8	MD 20	MD 40	3.3	610
54AVR7	52	7	28	58	17 <sup>9</sup> / <sub>16</sub>	40 <sup>3</sup> / <sub>4</sub>	115 <sup>3</sup> / <sub>8</sub>	30	10 DIA.	8	MD 20	MD 40	3.3	690
72AVR7	69	7	28	76	17 <sup>9</sup> / <sub>16</sub>	40 <sup>3</sup> / <sub>4</sub>	133 <sup>3</sup> / <sub>8</sub>	38	10 DIA.	8	MD 20	MD 40	3.3	770
18AVR14	34	14	40	28	26 <sup>1</sup> / <sub>4</sub>	51	95 <sup>5</sup> / <sub>8</sub>	20	10 DIA.	10	MD 40	MD 40	4.7	660
36AVR14	69	14	40	40	26 <sup>1</sup> / <sub>4</sub>	51	107 <sup>5</sup> / <sub>8</sub>	22	10 DIA.	10	MD 40	MD 40	4.7	830
54AVR14	104	14	40	58	26 <sup>1</sup> / <sub>4</sub>	51	125 <sup>5</sup> / <sub>8</sub>	30	10 DIA.	10	MD 40	MD 40	4.7	940
72AVR14	139	14	40	76	26 <sup>1</sup> / <sub>4</sub>	51	143 <sup>5</sup> / <sub>8</sub>	38	10 DIA.	10	MD 40	MD 40	4.7	1050
96AVR14	185	14	40	100	26 <sup>1</sup> / <sub>4</sub>	51	167 <sup>5</sup> / <sub>8</sub>	48	10 DIA.	10	MD 40	MD 40	4.7	1190
36AVR21	104	21	47	40	32 <sup>5</sup> / <sub>16</sub>	57	113 <sup>5</sup> / <sub>8</sub>	22	10 X 20	10	MD 40	MD 40	5.4	1110
54AVR21	156	21	47	58	32 <sup>5</sup> / <sub>16</sub>	57	131 <sup>5</sup> / <sub>8</sub>	30	10 X 20	10	MD 40	MD 40	5.4	1270
72AVR21	209	21	47	76	32 <sup>5</sup> / <sub>16</sub>	57	149 <sup>5</sup> / <sub>8</sub>	38	10 X 20	10	MD 40	MD 40	5.4	1440
96AVR21	278	21	47	100	32 <sup>5</sup> / <sub>16</sub>	57	173 <sup>5</sup> / <sub>8</sub>	48	10 X 20	10	MD 40	MD 40	5.4	1640
54AVR32	239	32	60	58	43 <sup>3</sup> / <sub>16</sub>	68 <sup>3</sup> / <sub>4</sub>	142 <sup>7</sup> / <sub>8</sub>	30	10 X 20	10	MD 40	MD 40	6.5	1770
72AVR32	318	32	60	76	43 <sup>3</sup> / <sub>16</sub>	68 <sup>3</sup> / <sub>4</sub>	160 <sup>7</sup> / <sub>8</sub>	38	10 X 20	10	MD 40	MD 40	6.5	1980
96AVR32	425	32	60	100	43 <sup>3</sup> / <sub>16</sub>	68 <sup>3</sup> / <sub>4</sub>	184 <sup>7</sup> / <sub>8</sub>	48	10 X 20	10	MD 40	MD 40	6.5	2260
54AVR39	291	39	66	58	48 <sup>3</sup> / <sub>4</sub>	73 <sup>1</sup> / <sub>2</sub>	148 <sup>3</sup> / <sub>8</sub>	30	10 X 30	10	MD 40	MD 40	7.5	2050
72AVR39	388	39	66	76	48 <sup>3</sup> / <sub>4</sub>	73 <sup>1</sup> / <sub>2</sub>	166 <sup>3</sup> / <sub>8</sub>	38	10 X 30	10	MD 40	MD 40	7.5	2290
96AVR39	518	39	66	100	48 <sup>3</sup> / <sub>4</sub>	73 <sup>1</sup> / <sub>2</sub>	190 <sup>3</sup> / <sub>8</sub>	48	10 X 30	10	MD 40	MD 40	7.5	2600
72AVR52	518	52	72	76	54	78 <sup>5</sup> / <sub>8</sub>	171 <sup>1</sup> / <sub>4</sub>	38	10 X 30	10	MD 40	MD 40	9.1	2660
96AVR52	690	52	72	100	54	78 <sup>5</sup> / <sub>8</sub>	195 <sup>1</sup> / <sub>4</sub>	48	10 X 30	10	MD 40	MD 40	9.1	3020
72AVR62	617	62	84	76	62 <sup>5</sup> / <sub>8</sub>	89 <sup>1</sup> / <sub>4</sub>	181 <sup>1</sup> / <sub>8</sub>	38	10 X 45	12	MD 75	MD 139	10.6	3230
96AVR62	823	62	84	100	62 <sup>5</sup> / <sub>8</sub>	89 <sup>1</sup> / <sub>4</sub>	205 <sup>1</sup> / <sub>8</sub>	48	10 X 45	12	MD 75	MD 139	10.6	3660
72AVR80	797	80	93	76	67	97	189 <sup>5</sup> / <sub>8</sub>	38	10 X 45	16	MD 139	MD 139	13.2	3860
96AVR80	1062	80	93	100	67	97	213 <sup>5</sup> / <sub>8</sub>	48	10 X 45	16	MD 139	MD 139	13.2	4360



see section 1  
page 1-12 for  
Standard Product  
offering