

520 Blower Package



520 Blower package shown in customer requested specialty color

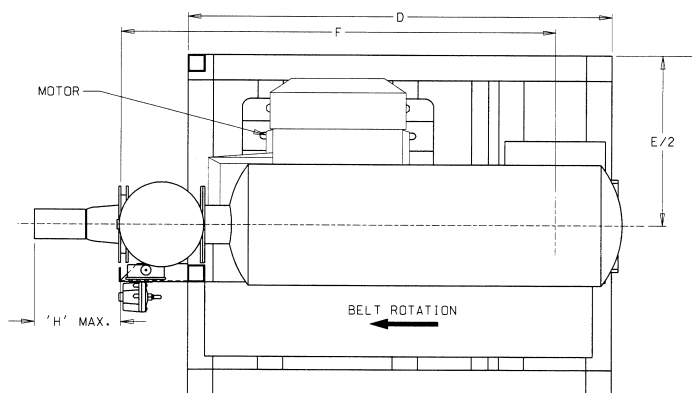
The MAC 520 Series of pressure style blower packages are configured around the size and performance of the blower to optimize performance. The series contains 6 models with line sizes from 2" to 8". The silencers are premium grade chambered type for maximum noise reduction. A wide variety of blowers manufactured by Roots, Sutorbilt and Duroflow are available with this package.

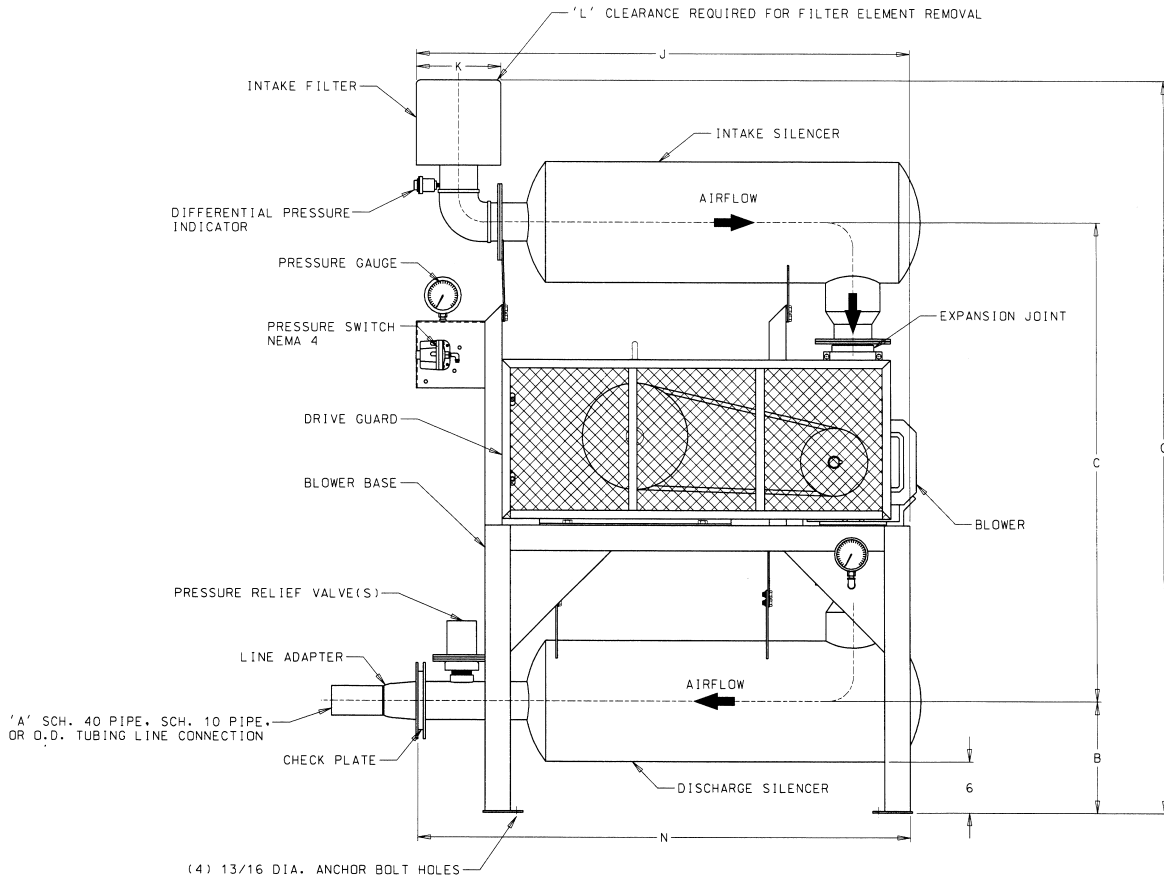
Standard Specifications

- Positive displacement blower
- Table top base (painted)
- Adjustable motor base
- V-belt drive
- OSHA standard drive guard
- Relief valve
- Check valve
- Inter-connecting hardware
- Discharge silencer (absorptive type)
- Combination inlet filter/silencer
- Pressure gauge
- All blowers are rated for 15 PSI maximum
- All blower volumes are based on standard inlet conditions (14.7 PSIA, 70° F)
- MAC white paint standard

Options:

- Pressure switch (NEMA 4, NEMA 7/9 and dual settings available)
- Temperature gauge
- Temperature switch
- Galvanized base
- Expansion joints
- Sanitary base design
- Tachometer
- Acoustically treated guard and silencers
- Vibration isolators
- If noise levels must be guaranteed at less than 90 dBa, a sound enclosure or acoustic treated components will be necessary





Dimensions (IN.)

MODEL	A	B	C	D	E	F	G	H	J	K	L	N	WT. (LBS.)
522	2	10 ³ / ₈	39	40	30	29 ¹³ / ₁₆	62 ⁷ / ₈	10 ³ / ₈	35 ¹ / ₂	10	11	34 ¹³ / ₁₆	1075
523	3	11 ¹ / ₈	62 ¹ / ₄	45 ¹ / ₂	33 ¹ / ₂	47 ¹¹ / ₁₆	88 ⁷ / ₁₆	10 ³ / ₈	59 ⁹ / ₁₆	10	11	58 ¹ / ₈	2050
524	4	13 ³ / ₈	57 ³ / ₄	50 ¹ / ₂	33 ¹ / ₂	51 ¹¹ / ₁₆	87 ⁹ / ₁₆	10 ³ / ₈	60 ⁹ / ₁₆	10	11	60 ⁷ / ₁₆	2275
525	5	14 ³ / ₈	65 ³ / ₈	50 ¹ / ₂	40	62 ¹³ / ₁₆	96 ³ / ₄	11 ¹ / ₈	74 ³ / ₈	16	11	70 ¹³ / ₁₆	2900
526	6	15 ¹ / ₈	71 ¹³ / ₁₆	55	40	72 ³ / ₄	105 ³ / ₄	11 ¹ / ₈	85 ¹³ / ₁₆	16	17	85 ¹ / ₂	3650
528	8	17 ³ / ₁₆	82	70	45	93 ⁵ / ₁₆	134 ⁷ / ₁₆	12 ¹ / ₈	118	22 ¹ / ₂	18	105 ¹ / ₄	4300