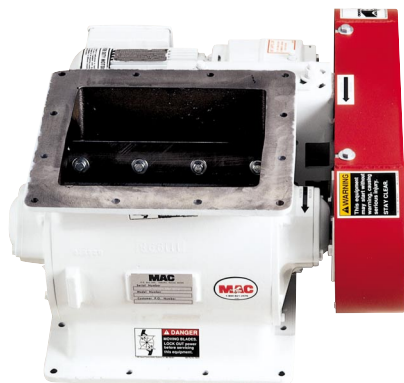


Inboard Bearing Rotary Valves (RV)



formerly a
SEMCO, Inc.
product

Features

- Maximum shaft support with a minimum of rotor deflection
- Rugged construction
- High efficiency
- Inboard bearings
- Minimum leakage blow-back
- Double opposed lip seals (between the rotor ends and bearings) isolate bearings and protect from infiltration
- Locking collar secures the bearing and shaft assembly in proper end-to-end alignment.
- MAC white paint standard

Options:

- Motion indicator
- Variable speed drives
- Seal purge
- End plate purge (closed end rotors only)

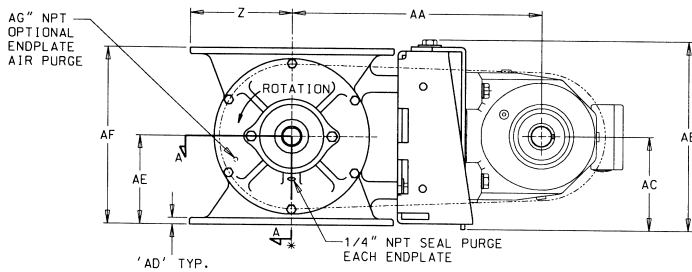
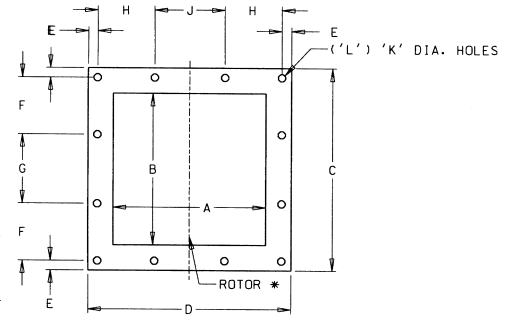
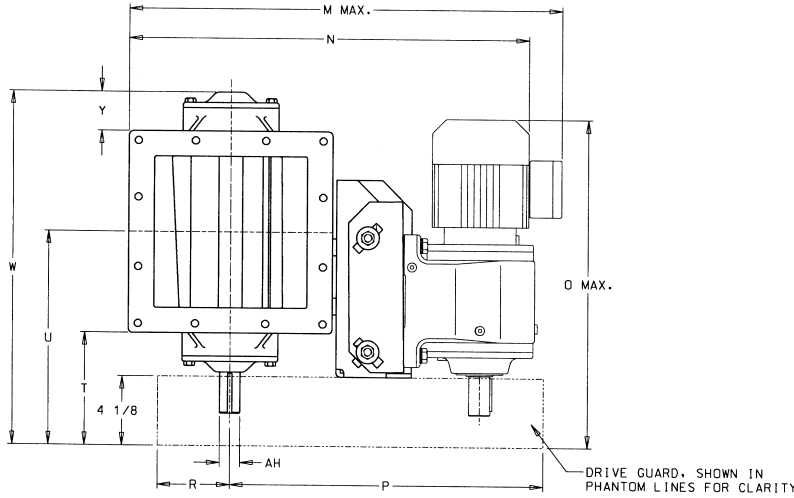
The MAC Inboard Bearing Rotary Valve (RV) is a high efficiency airlock with minimum leakage blow-back. Its inboard bearings provide the airlock with maximum shaft support and minimize rotor deflection.

The RV features double opposed lip seals that protect the inboard bearings from product infiltration. The RV is designed for food applications in wash down environments.

Construction (material designation- housing/end plates/rotor)

	CI/CI/CS	CI/CI/SS	SS/SS/SS	AL/AL/SS
Housing	Gray Iron Class 30 Rectangular inlet/outlet flanges	Gray Iron Class 30 Rectangular inlet/outlet flanges	Cast Alloy CF8 (304 SS) Rectangular inlet/outlet flanges	Aluminum Alloy 356-T6 Hard anodized Rectangular inlet/outlet flanges
End Plates	Gray Iron Class 30 Inboard bearing design	Gray Iron Class 30 Inboard bearing design	Cast Alloy CF8 (304 SS) Inboard bearing design	Aluminum Alloy 356-T6 Hard anodized Inboard bearing design
Max. Pressure Rating	15 PSI	15 PSI	15 PSI	15 PSI
Standard Rotor	Carbon Steel c1018 CRS 8 vanes* open end Adjustable beveled tip rotor	304 Stainless steel 8 vanes* open end Adjustable beveled tip rotor	304 Stainless steel 8 vanes* open end Adjustable beveled tip rotor	304 Stainless steel 8 vanes* open end Adjustable beveled tip rotor
Available Rotor Options	Fixed tips-must be speci- fied-square or beveled with 1/8" land Closed end rotor Filled pocket rotor Smooth pocket rotor Sanitary rotor Urethane flex tip rotor Teflon adjustable tip rotor	Fixed tips-must be speci- fied-square or beveled with 1/8" land Closed end rotor Filled pocket rotor Smooth pocket rotor Urethane flex tip rotor Teflon adjustable tip rotor Other SS material available	Fixed tips-must be speci- fied-square or beveled with 1/8" land Closed end rotor Filled pocket rotor Smooth pocket rotor Sanitary rotor Urethane flex tip rotor Teflon adjustable tip rotor Other SS material available	Fixed tips-must be speci- fied-square or beveled with 1/8" land Closed end rotor Filled pocket rotor Smooth pocket rotor Urethane flex tip rotor Teflon adjustable tip rotor Other SS material available

(*RV-02 has 6 vanes)



Dimensions are for an RV with a parallel drive, please consult your MAC Sales Representative for dimensions on bare RV airlocks.

Dimensions (IN.)

MODEL	A	B	C	D	E	F	G	H	J
RV - 01	6½	6½	SEE DTL.	SEE DTL.	½	SEE DTL.	SEE DTL.	SEE DTL.	SEE DTL.
RV - 02	9	9	12	12	⅞	3⅜	4½	3⅜	4⅜
RV - 04	10	11	14¾	13¾	⅝	4½	4½	4⅜	4¼
RV - 08	12	12	16½	16½	¾	5	5	5	5
RV - 12	14	15¼	19¾	18½	¾	6¼	5¾	5⅝	5¾

Dimensions (IN.)

MODEL	K	L	M	N	O	P	R	T	U	W	Y	Z
RV - 01	7/16	6	16 1/16	14 3/16	23 3/8	14 11/16	4	5 3/8	10 3/8	16 5/8	1 1/2	4 3/4
RV - 02	7/16	12	25 9/16	23 3/8	25 1/2	19 11/16	5 1/2	6 11/16	12 1/16	21	2 5/16	6
RV - 04	7/16	12	26 15/16	24 3/8	26 1/4	19 9/16	5 1/2	6 9/16	13 15/16	23 1/2	2 3/16	6 7/8
RV - 08	9/16	12	30 1/4	28	28 3/8	20 7/16	6 11/16	6 5/16	14 9/16	24 15/16	2 3/8	8 3/4
RV - 12	9/16	12	33 3/8	31 3/8	28 3/8	22 1/2	7 7/16	6 7/8	16 3/4	29	2 3/8	9 1/4

Dimensions (IN.)

MODEL	DIMENSIONS (IN.)									APPROX.			MOTOR (HP)	NUMBER OF ROTOR VANES
	AA	AB	AC	AD	AE	AF	AG	AH	CFR	GREY IRON	ALUMINUM	304 S.S.		
RV - 01	11 3/8	7 13/16	4 1/16	3/8	4 3/8	8 3/4	N/A	1 3/16	.10	205	160	205	1/3	6
RV - 02	14 3/16	11 3/8	5 1/2	3/8	5 3/16	10 3/8	3/8	1 3/16	.20	225	170	225	1/2	6
RV - 04	14 11/16	11 3/8	5 1/2	1/2	6 3/8	13 3/4	3/8	1 1/16	.40	350	250	350	3/4 OR 1	8
RV - 08	15 15/16	11 3/8	5 1/2	5/8	7 3/8	15 1/4	3/8	1 1/16	.80	500	330	500	1 OR 1 1/2	8
RV - 12	17 1/4	15 1/2	7 11/16	5/8	8 7/8	17 3/4	3/8	1 3/4	1.20	655	410	655	1 OR 1 1/2	8