

Conveying Valves (CV)

formerly a
SEMCO, INC.
product



The MAC Conveying Valve (CV) blow through design allows the airlock to meter product from the rotating pockets directly into the conveying line. The CV is available in either baffled (style "A") or non-baffled (style "B") inlet arrangements.

The baffle prevents any pressurized air from blowing back through the valve and creating turbulence at the inlet; this allows the product to flow freely. Style "A" is recommended when handling light bulk density product or powders that would normally not flow well with blow-by air circulating through the product.

A specialized frozen food design is available for conveying frozen products. Please contact your MAC representative for more information.

Construction (material designation- housing/end plates/rotor)

	CI/CI/CS	CI/CI/SS	SS/SS/SS	AL/AL/SS
Housing	Gray Iron Class 30 Rectangular inlet/outlet flanges	Gray Iron Class 30 Rectangular inlet/outlet flanges	Cast Alloy CF8 (304 SS) Rectangular inlet/outlet flanges	Aluminum Alloy 356-T6 Hard anodized Rectangular inlet/outlet flanges
End Plates	Gray Iron Class 30 Inboard bearing design	Gray Iron Class 30 Inboard bearing design	Cast Alloy CF8 (304 SS) Inboard bearing design	Aluminum Alloy 356-T6 Hard anodized face Inboard bearing design
Max. Pressure Rating	20 PSI	20 PSI	20 PSI	20 PSI
Standard Rotor	Carbon Steel c1018 CRS 8 vanes open ends Adjustable beveled tips rotor	304 Stainless Steel 8 vanes open ends Adjustable beveled tip rotor	304 Stainless Steel 8 vanes open ends Adjustable beveled tip rotor	304 Stainless Steel 8 vanes open ends Adjustable beveled tip rotor
Available Rotor Options	Fixed tips-must be speci- fied-square or beveled with 1/8" land Smooth pocket rotor Sanitary rotor Urethane flex tip rotor Teflon adjustable tip rotor	Fixed tips-must be speci- fied-square or beveled with 1/8" land Smooth pocket rotor Urethane flex tip rotor Teflon adjustable tip rotor Other SS materials avail- able on special order (304L, 316, 316L)	Fixed tips-must be speci- fied-square or beveled with 1/8" land Smooth pocket rotor Sanitary rotor Urethane flex tip rotor Teflon adjustable tip rotor Other SS materials avail- able on special order (304L, 316, 316L)	Fixed tips-must be speci- fied-square or beveled with 1/8" land Smooth pocket rotor Sanitary rotor Urethane flex tip rotor Teflon adjustable tip rotor Other SS materials avail- able on special order (304L, 316, 316L)



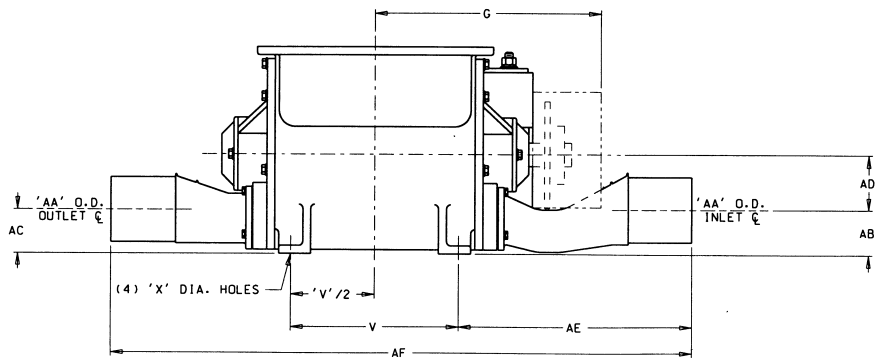
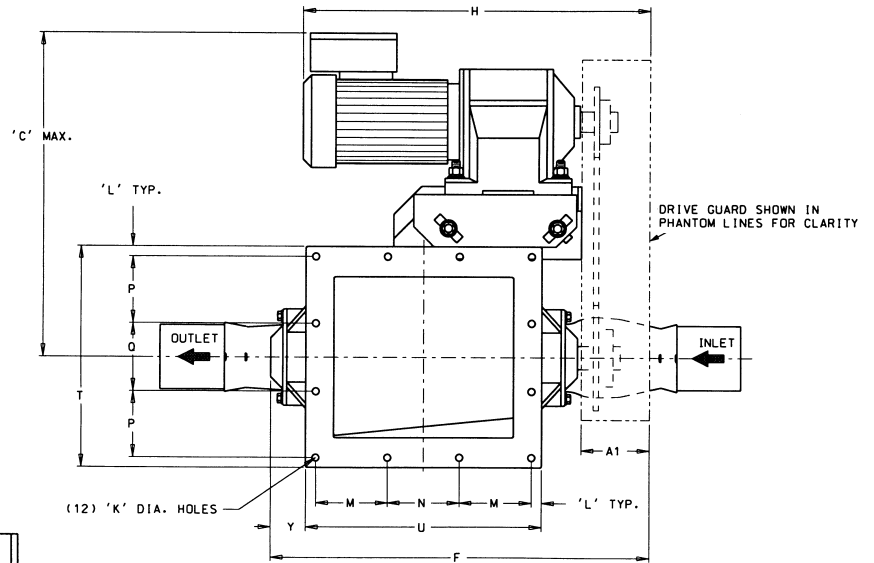
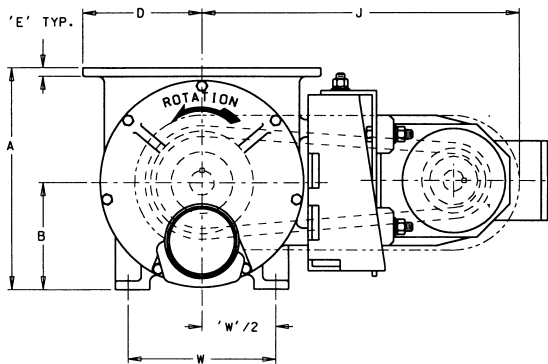
Features

- Rugged Construction
- High efficiency
- Inboard bearing design offers maximum shaft support
- Minimum leakage blow-back
- Low headroom
- 20 PSI pressure differential
- Counter clockwise rotation from drive end
- MAC white paint standard

Options:

- Motion indicator
- Seal purge

Dimensions are for a CV with a parallel drive, please consult your MAC Sales Representative for dimensions on bare CV airlocks.



Dimensions (IN.)

MODEL	AA	AB	AC	AD	AE	AF
CV-04	2 3/8	2 9/16	2 1/2	3 9/16	13 1/2	35 3/16
CV-04	3	2 9/16	2 1/2	3 9/16	13 1/2	35 3/16
CV-04	3 1/2	2 1/2	2 1/2	3 3/8	14 1/2	36 3/16
CV-04	4	2 3/4	2 11/16	3 3/8	14 1/2	36 3/16
CV-04	4 1/2	3	2 15/16	3 1/8	14 1/2	36 3/16
CV-04	5	3	2 15/16	3 1/8	14 1/2	36 3/16
CV-12	4	3 3/16	2 7/8	4 15/16	14 11/16	43 7/8
CV-12	4 1/2	3 5/16	3 1/8	4 15/16	14 11/16	43 7/8
CV-12	5	3 3/8	3 3/8	4 7/8	14 11/16	43 7/8

Dimensions (IN.)

MODEL	CFR	A	B	C	D	E	F	G	H	J	K	L	M
CV-04	0.40	12 3/4	6 1/8	20 1/8	6 7/8	1/2	23 3/8	14 1/16	21 5/8	18 7/16	7/16	3/8	4 1/2
CV-12	1.20	17 3/8	8 3/4	24	9 1/4	5/8	29 1/4	17	22 3/4	22 3/4	9/16	3/4	6 1/4

Dimensions (IN.)

MODEL	CFR	N	P	Q	T	U	V	W	X	Y	A1	MOTOR (HP)	WT. (LBS.)
CV-04	0.40	4 1/2	4 3/8	4 1/4	13 3/4	14 3/4	10 1/2	8 1/2	7/16	2 3/16	4 1/4	3/4	365
CV-12	1.20	5 3/4	5 5/8	5 3/4	18 1/2	19 3/4	14 1/2	12	9/16	2 3/8	4 3/8	1	675