

# Fabricated Round (FR) Airlocks

## Standard Specifications

- Fabricated carbon steel housing
- Fabricated carbon steel endplates with 4 bolt flange bearings
- Carbon steel, urethane sandwich rotor
- Carbon steel graphite filled 6 vane rotor
- Urethane flex tips
- Counter clockwise rotation
- 220° F maximum operating temperature
- Rated for 20" w.c. maximum operating pressure
- MAC white paint standard

## With drive:

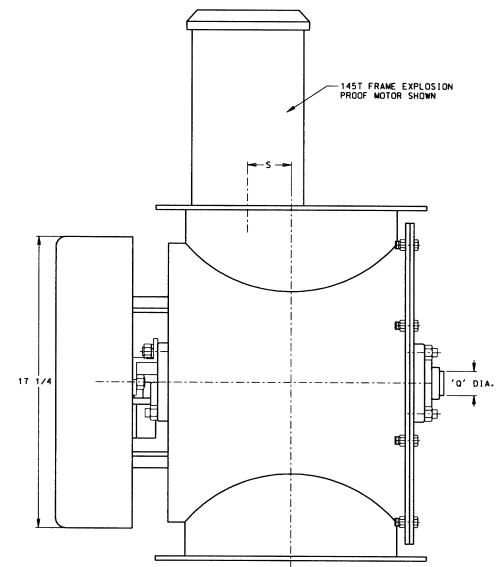
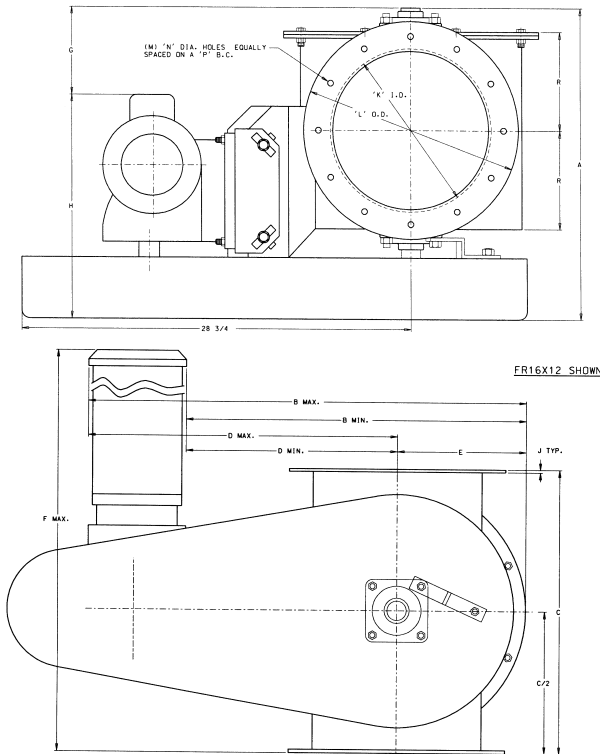
- 230/460/3/60; TEFC
- 18 RPM

## Option:

- 304 Stainless steel construction

The MAC fabricated round (FR) airlock is equipped with flexible, wiper blade rotors. These extra flexible blades provide superior handling for stringy or fibrous products.

This design is utilized in applications where little or no pressure differential is present across the inlet or outlet ports and temperature is ambient. The FR airlock is especially suited for use in the wood, grain and agriculture industries.



Dimensions are for a FR with a right angle drive, please consult your MAC Sales Representative for dimensions on a FR airlock with a parallel drive or bare.

### Dimensions (IN.)

MODEL	B			D			E	F	G	H	J	K
	A	MIN.	MAX.	C	MIN.	MAX.						
FR 16x12	22 <sup>7</sup> / <sub>8</sub>	23 <sup>3</sup> / <sub>8</sub>	32 <sup>3</sup> / <sub>8</sub>	21	13 <sup>7</sup> / <sub>8</sub>	22 <sup>7</sup> / <sub>8</sub>	9 <sup>1</sup> / <sub>2</sub>	33	9	13 <sup>3</sup> / <sub>8</sub>	3 <sup>1</sup> / <sub>16</sub>	12
FR 20x16	27 <sup>7</sup> / <sub>8</sub>	27 <sup>5</sup> / <sub>16</sub>	36 <sup>5</sup> / <sub>16</sub>	25	15 <sup>13</sup> / <sub>16</sub>	24 <sup>13</sup> / <sub>16</sub>	11 <sup>1</sup> / <sub>2</sub>	32 <sup>3</sup> / <sub>4</sub>	11 <sup>1</sup> / <sub>2</sub>	15 <sup>5</sup> / <sub>8</sub>	1 <sup>1</sup> / <sub>4</sub>	16

### Dimensions (IN.)

MODEL	L	M	N	P	Q	R	S	HP	WEIGHT	CAPACITY
										CFR
FR 16x12	15	12	7 <sup>1</sup> / <sub>16</sub>	13 <sup>13</sup> / <sub>16</sub>	1 <sup>7</sup> / <sub>16</sub>	7 <sup>1</sup> / <sub>4</sub>	2 <sup>5</sup> / <sub>8</sub>	1 <sup>1</sup> / <sub>2</sub>	254	1.47
FR 20x16	19	16	9 <sup>1</sup> / <sub>16</sub>	17 <sup>1</sup> / <sub>2</sub>	1 <sup>15</sup> / <sub>16</sub>	9 <sup>1</sup> / <sub>4</sub>	4 <sup>7</sup> / <sub>8</sub>	2	443	3